

# FenceSentry Distributed Acoustic Sensor

## DETECTOR UNIT (FRONT AND REAR VIEW)



## PROCESSOR UNIT (REAR VIEW ONLY)



## FENCEENTRY DETECTOR UNIT SPECIFICATIONS

FENCEENTRY DETECTOR UNIT SPECIFICATIONS	
Range per channel*	5 km
Number of channels	1 or 2
Ordering Part Numbers	DAS-FS-01-05-1CH DAS-FS-01-05-2CH
DATA ACQUISITION	
Acquisition Frequency	100 to 200 Hz
Event accuracy resolution	1 to 5m
OPTICAL	
Laser Wavelength	1550 nm
Optical Budget	4 dB
Connector Type	FC / APC
Cable type	Single mode 9/125
Bandweaver Cable	FenceLine as standard, Other cables available on request
Laser Safety Classification	Class 1M
ELECTRICAL AND HARDWARE INTERFACES	
Supply Voltage	110V-220V AC +/-10% (AC)
Power Consumption	20W (average) / 40W (max)
Relays	Yes, 24 total, 1:Power off, 2:Fault, 3: CH1 Fiber break, 4: CH2 fiber break, 5-24: User addressable
Modbus	Yes - via software adapter
Serial	No
USB	No
PHYSICAL	
Rack height	3U
Dimensions (W * H * D)	431 x 132 x 384 mm
Net Weight	10 kg
IP Rating	IP40
Material	Painted Steel
Colour/Finish	Matt Black
Shipping dimensions	570 x 330 x 540 mm
Shipping Weight	15 kg
ENVIRONMENTAL	
Operating Temperature	0° to +45°C
Operating Humidity	0 to 95% RH, Non-condensing
Storage Temperature	-10°C to +85°C
Storage Humidity	0 to 95% RH, Non-condensing
SAFETY AND COMPLIANCE	
Laser Safety	IEC 60825-1:2007 (2nd Edition) and EN 60825-1:2007
CE - EMC	EMC 2014/30/EU - EN 61000-6-3:2007+A1:2011, EN 61000-3-2:2014, EN 61000-3-3:2013, EN 61000-6-1:2007
CE - LVD	LVD 2014/35/EU - IEC 61010-1:2010, EN 61010-1:2010
CE - RoHS	Yes
FDA	FDA Ascension number 1811134-000
FCC	47CFR Part 15:2017, ANSI C63.4:2014

\*Range is dependent on the optical quality of the sensing cable route. This can be confirmed upon reviewing an OTDR trace vs the planned optical budget.

# FENCESENTRY PROCESSOR UNIT SPECIFICATIONS

## FENCESENTRY PROCESSOR UNIT SPECIFICATIONS

Processor	i5-8500, 3GHz, 9MB
Mainboard	AIMB7062G
BIOS	AMI 128Mbit SPI Flash
Memory	Dual Channel (Non-ECC) DDR4 3400/2666, 8 GB (RAM), 1 TB (ROM)

## GRAPHICS

Graphics Card	Chipset Integrated Intel HD Graphics
---------------	--------------------------------------

## INTERFACES (all on rear panel)

USB	4 x USB (2 x USB 3.1 Gen, 2 x USB 2.0 Gen)
Serial	2 x Serial (RS-232)
PS/2	2 x PS/2 (1 x Keyboard, 1 x Mouse)
HDMI / DVI / Displayport	1 x DVI (Resolution up to 1920 x 1200 @ 60Hz)
VGA	1 x VGA (Resolution up to 1920 x 1200 @ 60Hz)
Ethernet	1000 Mbps, 3 x RJ-45 1x connection to FenceSentry DU, 1x user connection (network switch / SCADA etc.) 1x reserved (remote login / maintenance)

## ELECTRICAL

Input Voltage	AC 100 ~ 240 V
Power Consumption	120W
Power Supply Safety	UL / TUV / CB / CCC

## PHYSICAL

Dimensions (W * H * D)	482 x 177 x 450 mm (19" standard rack, 4U height)
Weight	15.75 kg (21kg Shipping weight)
Shipping dimensions	600 x 330 x 565 mm
IP Rating	4
System Fan details	1 (12 cm / 77 CFM)

## ENVIRONMENTAL

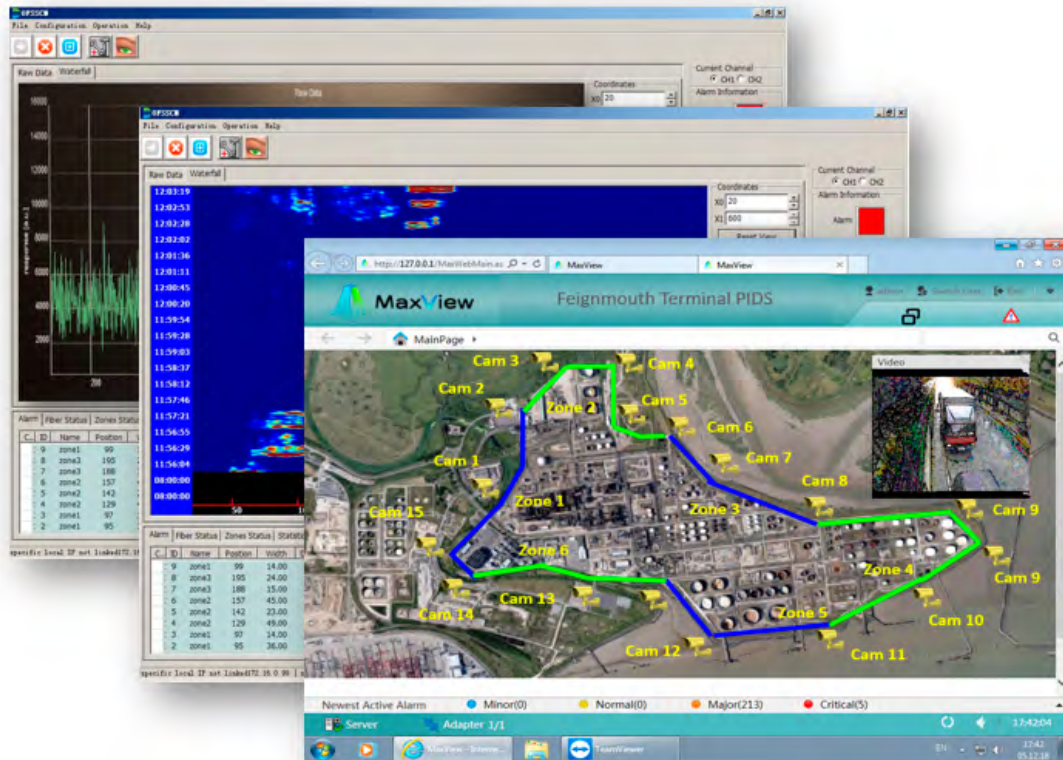
Operating Temperature rating	Operating: 0° to +60 °C
Humidity	Operating 10 ~ 95% @ 40°C, non-condensing / Storage 10 ~ 95% @ 60°C, non-condensing
Storage Temperature	-40° to +85°C

## OPERATING SYSTEM AND SOFTWARE

Operating System	Windows 10 English Professional 64 bit
Software	OFSS CM & MaxView for Fence



# SOFTWARE INTERFACE



# SYSTEM INTEGRATION OVERVIEW

