

FenceSentry Distributed Acoustic Sensor

DETECTOR UNIT (FRONT AND REAR VIEW)



PROCESSOR UNIT (REAR VIEW ONLY)



FENCEENTRY DETECTOR UNIT SPECIFICATIONS

FENCEENTRY DETECTOR UNIT SPECIFICATIONS	
Range per channel*	5 km
Number of channels	1 or 2
Ordering Part Numbers	DAS-FS-01-05-1CH DAS-FS-01-05-2CH
DATA ACQUISITION	
Acquisition Frequency	100 to 200 Hz
Event accuracy resolution	1 to 5m
OPTICAL	
Laser Wavelength	1550 nm
Optical Budget	4 dB
Connector Type	FC / APC
Cable type	Single mode 9/125
Bandweaver Cable	FenceLine as standard, Other cables available on request
Laser Safety Classification	Class 1M
ELECTRICAL AND HARDWARE INTERFACES	
Supply Voltage	110V-220V AC +/-10% (AC)
Power Consumption	20W (average) / 40W (max)
Relays	Yes, 24 total, 1:Power off, 2:Fault, 3: CH1 Fiber break, 4: CH2 fiber break, 5-24: User addressable
Modbus	Yes - via software adapter
Serial	No
USB	No
PHYSICAL	
Rack height	3U
Dimensions (W * H * D)	431 x 132 x 384 mm
Net Weight	10 kg
IP Rating	IP40
Material	Painted Steel
Colour/Finish	Matt Black
Shipping dimensions	570 x 330 x 540 mm
Shipping Weight	15 kg
ENVIRONMENTAL	
Operating Temperature	0° to +45°C
Operating Humidity	0 to 95% RH, Non-condensing
Storage Temperature	-10°C to +85°C
Storage Humidity	0 to 95% RH, Non-condensing
SAFETY AND COMPLIANCE	
Laser Safety	IEC 60825-1:2007 (2nd Edition) and EN 60825-1:2007
CE - EMC	EMC 2014/30/EU - EN 61000-6-3:2007+A1:2011, EN 61000-3-2:2014, EN 61000-3-3:2013, EN 61000-6-1:2007
CE - LVD	LVD 2014/35/EU - IEC 61010-1:2010, EN 61010-1:2010
CE - RoHS	Yes
FDA	FDA Ascension number 1811134-000
FCC	47CFR Part 15:2017, ANSI C63.4:2014

*Range is dependent on the optical quality of the sensing cable route. This can be confirmed upon reviewing an OTDR trace vs the planned optical budget.

FENCESENTRY PROCESSOR UNIT SPECIFICATIONS

FENCESENTRY PROCESSOR UNIT SPECIFICATIONS

Processor i5-8500, 3GHz, 9MB

Mainboard AIMB7062G

BIOS AMI 128Mbit SPI Flash

Memory DDR 2400/2666 8G RAM 1T ROM

GRAPHICS

Graphics Card Chipset Integrated Intel HD Graphics

INTERFACES (all on rear panel)

USB 4 x USB (2 x USB 3.1 Gen, 2 x USB 2.0 Gen)

Serial 2 x Serial

PS/2 2 x PS/2 (1 x Keyboard, 1 x Mouse)

HDMI / DVI / Displayport 1 x DVI (Resolution up to 1920 x 1200 @ 60Hz)

VGA 1 x VGA (Resolution up to 1920 x 1200 @ 60Hz)

Ethernet 1000 Mbps, 3 x RJ-45
1x connection to FenceSentry DU,
1x user connection (network switch / SCADA etc.)
1x reserved (remote login / maintenance)

ELECTRICAL

Input Voltage AC 100 ~ 240 V

Power Consumption 300W

Power Supply Safety UL / TUV / CB / CCC

PHYSICAL

Dimensions (W * H * D) 482 x 177 x 450 mm (19" standard rack, 4U height)

Weight 15.75 kg (21kg Shipping weight)

Shipping dimensions 600 x 330 x 565 mm

IP Rating 4

System Fan details 1 (12 cm / 77 CFM)

ENVIRONMENTAL

Operating Temperature rating Operating: 0° to +60 °C

Humidity Operating 10 ~ 95% @ 40°C, non-condensing /
Storage 10 ~ 95% @ 60°C, non-condensing

Storage Temperature -40° to +85°C

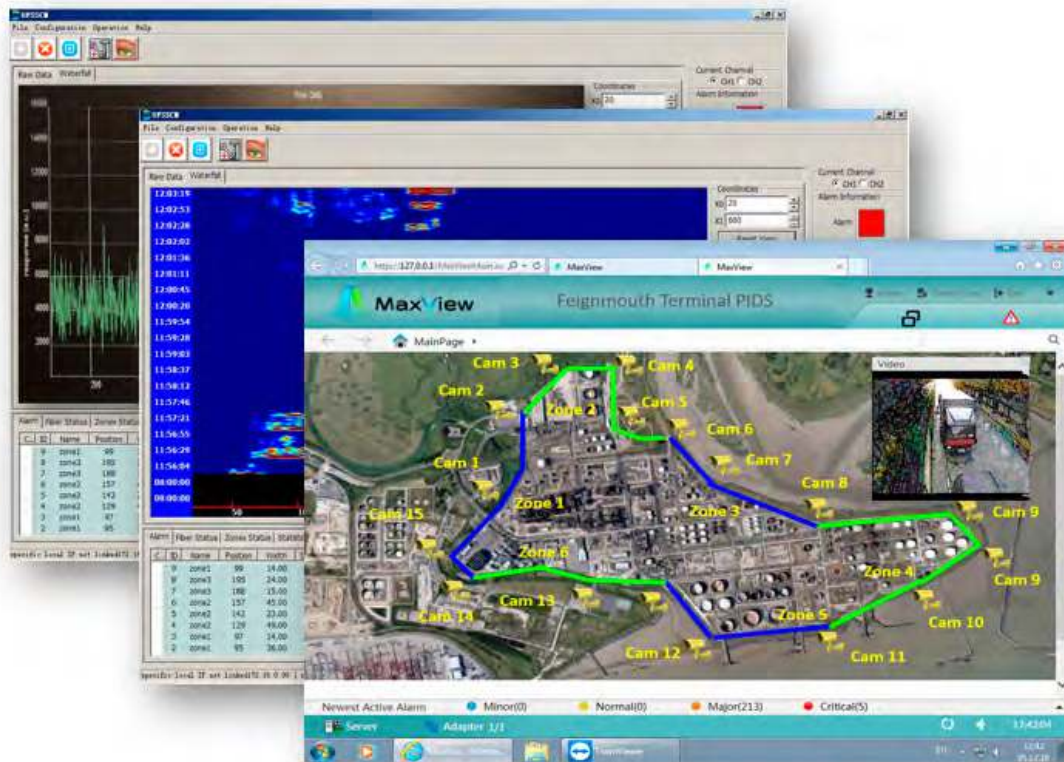
OPERATING SYSTEM AND SOFTWARE

Operating System Windows Enterprise

Software OFSS CM & MaxView for Fence

The above specifications are provided as guidance only and cannot be guaranteed to be exact, and Bandweaver will supply the equivalent or better.

SOFTWARE INTERFACE



SYSTEM INTEGRATION OVERVIEW

