

FenceSentry Distributed Acoustic Sensor

DETECTOR UNIT (FRONT AND REAR VIEW)



PROCESSOR UNIT (REAR VIEW ONLY)



PROCESSOR UNIT SPECIFICATIONS

FENCESENTRY PROCESSOR UNIT SPECIFICATIONS

Processor	i5-8500, 3GHz, 9MB
Mainboard	AIMB7062G
BIOS	AMI 128Mbit SPI Flash
Memory	DDR 2400/2666 8G RAM 1T ROM

GRAPHICS

Graphics Card	Chipset Integrated Intel HD Graphics
---------------	--------------------------------------

INTERFACES (all on rear panel)

USB	4 x USB (2 x USB 3.1 Gen, 2 x USB 2.0 Gen)
Serial	2 x Serial
PS/2	2 x PS/2 (1 x Keyboard, 1 x Mouse)
HDMI / DVI / Displayport	1 x DVI (Resolution up to 1920 x 1200 @ 60Hz)
VGA	1 x VGA (Resolution up to 1920 x 1200 @ 60Hz)
Ethernet	1000 Mbps, 3 x RJ-45 1x connection to FenceSentry DU, 1x user connection (network switch / SCADA etc.) 1x reserved (remote login / maintenance)

ELECTRICAL

Input Voltage	AC 100 - 240 V
Power Consumption	300W
Power Supply Safety	UL / TUV / CB / CCC

PHYSICAL

Dimensions	482mm x 478 mm x 177mm (4U)
Shipping dimensions	640mm x 370mm x 610mm
Weight	17 kg (20kg Shipping weight)
IP Rating	4
System Fan details	1 (12 cm / 77 CFM)

ENVIRONMENTAL

Operating Temperature rating	Operating: 0° to +60 °C
Humidity	Operating 10 - 95% @ 40°C, non-condensing / Storage 10 - 95% @ 60°C, non-condensing
Storage Temperature	-40° to +85°C

OPERATING SYSTEM AND SOFTWARE

Operating System	Windows Enterprise
Software	OFSS CM & MaxView for Fence

DETECTOR UNIT SPECIFICATIONS

FENCEENTRY DETECTOR UNIT SPECIFICATIONS

Range per channel*	5 km
Number of channels	1 or 2
Ordering Part Numbers	DAS-FS-01-05-1CH DAS-FS-01-05-2CH

DATA ACQUISITION

Acquisition Frequency	100 to 200 Hz
Event accuracy resolution	1 to 5m

OPTICAL

Laser Wavelength	1550 nm
Optical Budget	4 dB
Connector Type	FC / APC
Cable type	Single mode 9/125
Bandweaver Cable	FenceLine as standard, Other cables available on request
Laser Safety Classification	Class 1

ELECTRICAL AND HARDWARE INTERFACES

Supply Voltage	110V-220V AC +/-10% (AC)
Power Consumption	20W (average) / 40W (max)
Relays	Yes, 24 total, 1:Power off, 2:Fault, 3: CH1 Fiber break, 4: CH2 fiber break, 5-24: User addressable
Modbus	Yes - via software adapter
Serial	No
USB	No

PHYSICAL

Dimensions	431mm x 384mm x131mm (3U)
Shipping Dimensions	570mm x 530mm x 320mm
Weight	10 kg (13.8kg Shipping Weight)
IP Rating	IP40
Material	Painted Steel
Colour/Finish	Matt Black
Shipping dimensions	570 x 330 x 540 mm
Shipping Weight	15 kg

ENVIRONMENTAL

Operating Temperature	0° to +45°C
Operating Humidity	0 to 95% RH, Non-condensing
Storage Temperature	-10°C to +85°C
Storage Humidity	0 to 95% RH, Non-condensing

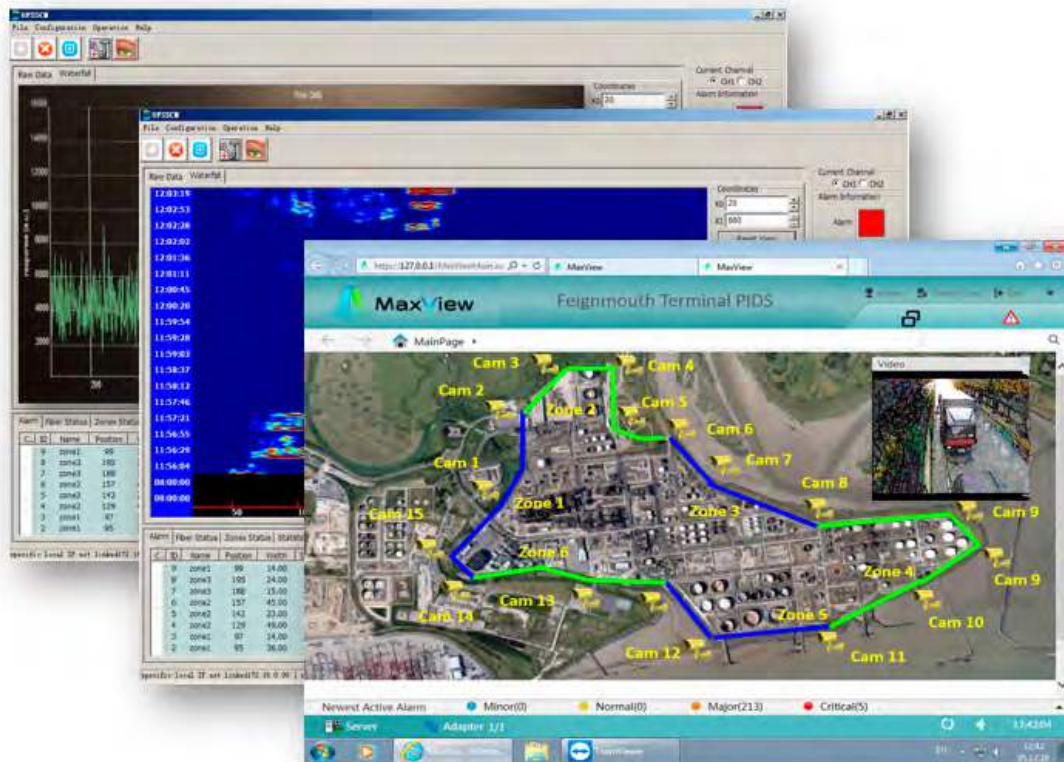
SAFETY AND COMPLIANCE

Laser Safety	IEC 60825-1:2007 (2nd Edition) and EN 60825-1:2007
CE - EMC	EMC 2014/30/EU - EN 61000-6-3:2007+A1:2011, EN 61000-3-2:2014, EN 61000-3-3:2013, EN 61000-6-1:2007
CE - LVD	LVD 2014/35/EU - IEC 61010-1:2010, EN 61010-1:2010
CE - RoHS	Yes
FDA	FDA Ascension number 1811134-000
FCC	47CFR Part 15:2017, ANSI C63.4:2014

*Range is dependent on the optical quality of the sensing cable route. This can be confirmed upon reviewing an OTDR trace vs the planned optical budget.

The above specifications are provided as guidance only and cannot be guaranteed to be exact, and Bandweaver will supply the equivalent or better.

SOFTWARE INTERFACE



SYSTEM INTEGRATION OVERVIEW

