



**Bandweaver**



# **MaxView**

## **For Security**

### **INTEGRATED MONITORING PLATFORM CUSTOMISED TO YOUR REQUIREMENTS**

The MaxView integrated monitoring platform provides operators with a fully customisable system with advanced visualisation and analytics to provide a complete real time overview of their assets security.

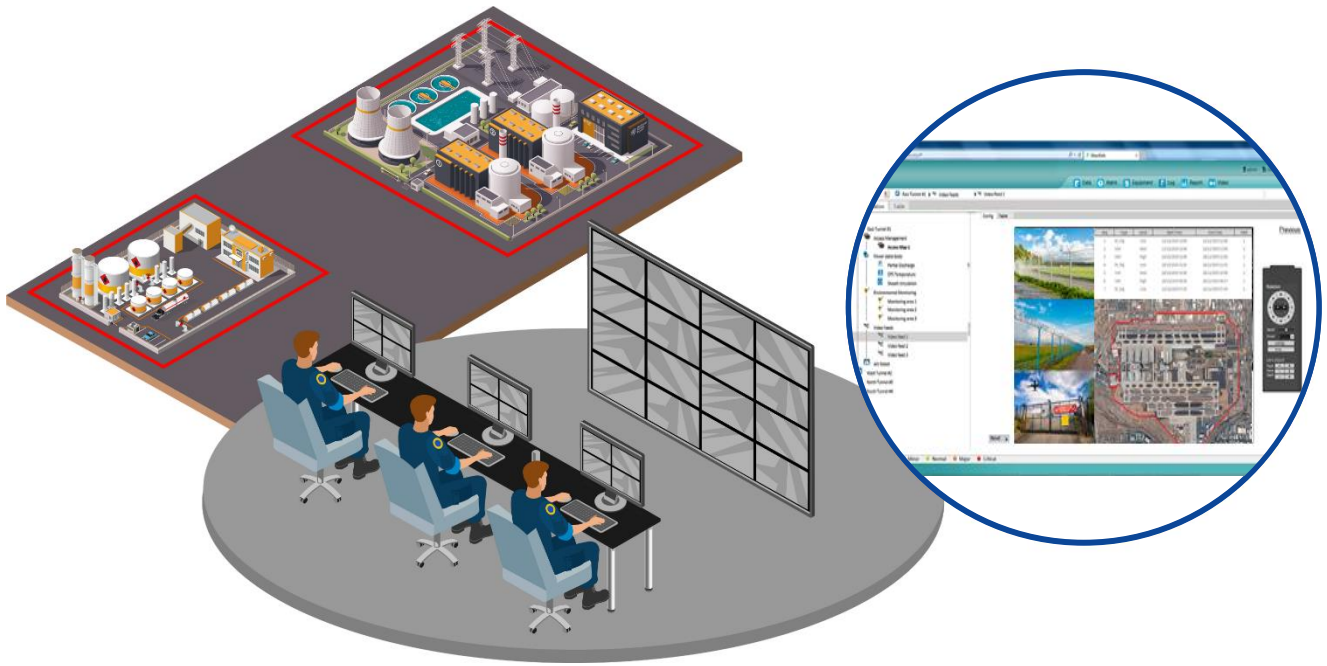
MaxView is a truly versatile solution and has been used in a wide range of industries including power, utilities, government, oil and gas, telecoms and military.

As standard, MaxView can interface with multiple 3<sup>rd</sup> party platforms including SCADA, SMS, CCTV, PSIM, VMS, etc using industry standard protocols.

MaxView is an ideal compliment for existing platforms or deployed as a standalone system providing you with the information you need - the way you want it.



**Monitored | Secured | Safe**



## INTELLIGENT INSIGHTS

### Improved Efficiency

Advanced visualisation creates situational awareness at all points in your infrastructure at all times. Furthermore, quick response time enables swift and effective decision-making which can reduce risks and improve efficiency.

### Easy to Deploy

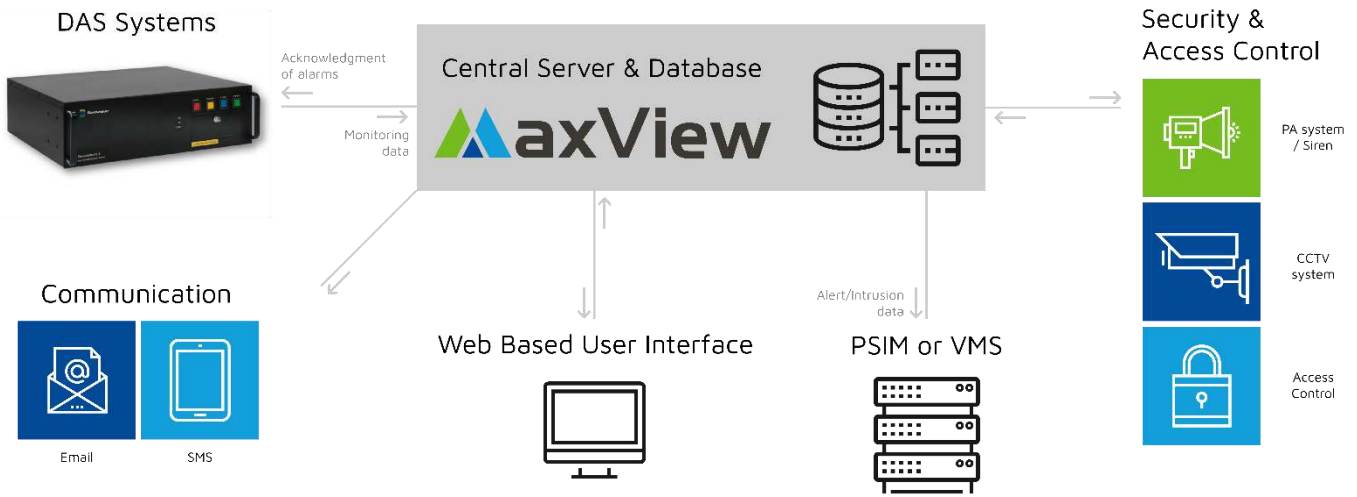
MaxView has a low total cost of ownership and is easy to deploy within multi-site organisations. Users can access the system through the cloud with a web browser interface and there is no software or hardware installation necessary.

### Bespoke to clients needs and requirements

With a highly adaptable user interface, MaxView offers higher engagement and improved decision making. Operator can also easily configure the GUI to their needs.



**MAXIMUM  
FLEXIBILITY SUITS  
BOTH SMALL AND  
LARGE OPERATORS**



## PERIMETER INTRUSION DETECTION

Perimeter Intrusion Detection Systems (PIDS) are used in an external environment to detect the presence of an intruder attempting to breach a perimeter.

Fiber optic technology is fast becoming the technology of choice for those looking for a reliable, accurate solution with minimal infrastructure requirements.

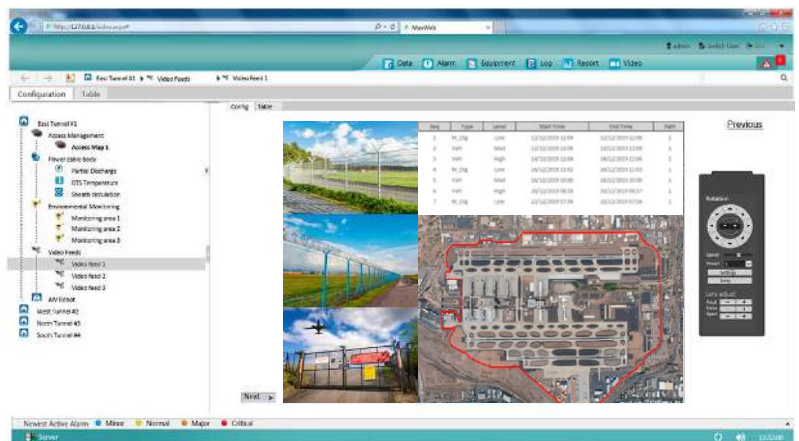
Bandweaver's fiber optic intrusion detection can detect both vehicle and person movement, enabling swift deployment of security teams to multiple incidents.

A single fiber optic cable can be attached to a fence and/or buried underground, enabling the solution to be utilised for a wide range of applications. The system is fully scalable for small sites through to perimeters and borders greater than 100km.

From the MaxView software platform, operators can quickly be alerted of a potential perimeter breach and track in real time the progress of any intruders.

With accurate real time location information indicated on the dynamic map view together with audio and visual alerts, MaxView is the ideal solution to protect your asset, no matter what the size.

Multiple cameras can also be directly integrated into MaxView providing a secondary visual indication of a perimeter breach for ultimate operator confidence.



MaxView's user configurable interface is extremely powerful and allows users to customise to their own requirements, which could include GIS maps, site schematics, P&ID diagrams, electrical network diagrams or 3D structural representations.

